

# Draft Climate Action Plan for Transportation Infrastructure (CAPTI)

CTC CARB HCD Joint Meeting | April 8, 2021



# CAPTI Overview

---



# Governor's Executive Order N-19-19

Leverage state transportation spending to help meet state climate goals

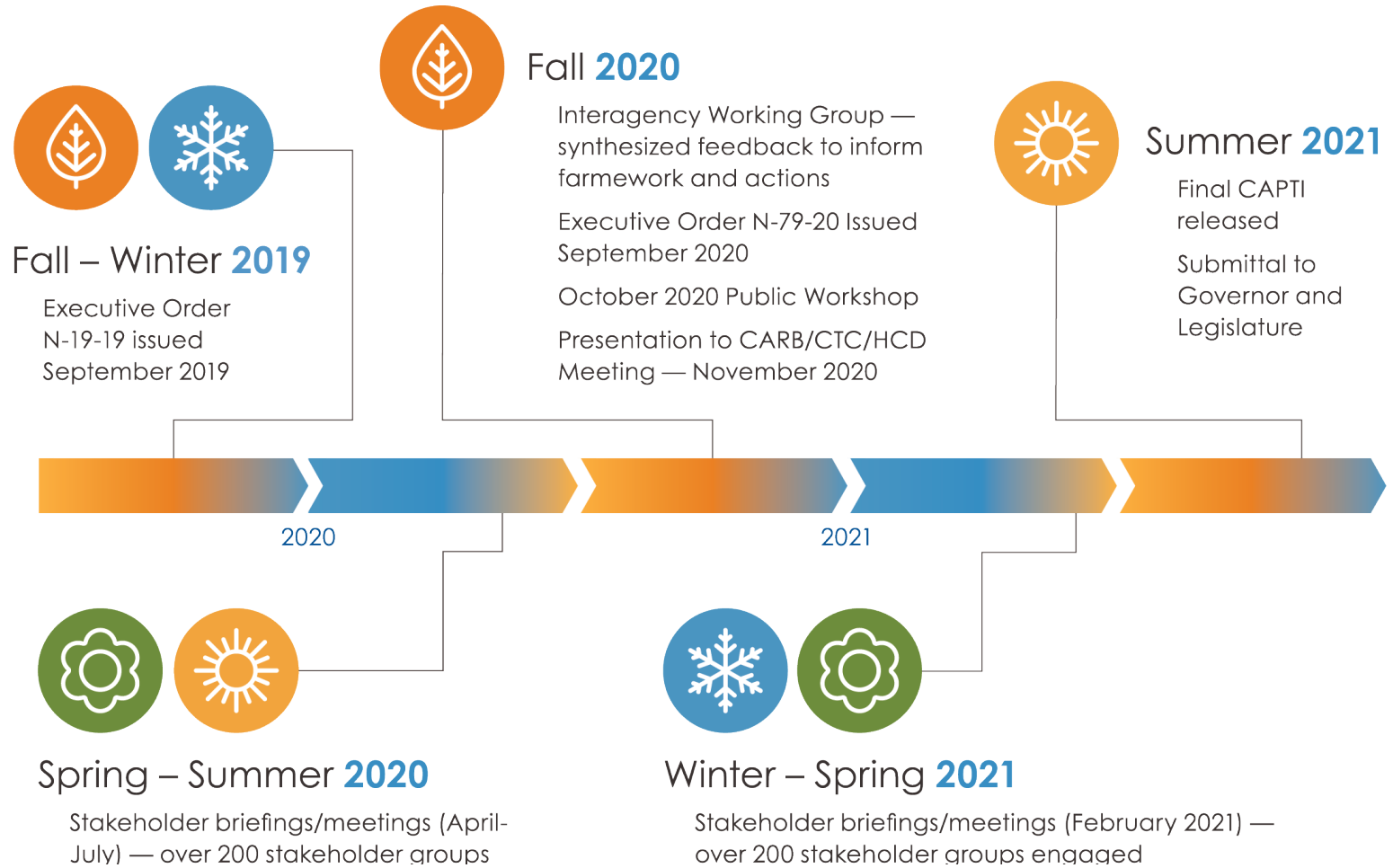
- Align planning and programming with objectives of California Climate Change Scoping Plan
- Reduce VMT by directing investments in a way that support infill development, especially housing near jobs
- Reduce congestion through innovative strategies that encourage people to shift from cars to other modes of travel
- Fund infrastructure that encourages transit use, walking, and biking
- Mitigate for any increases in transportation costs incurred on lower income Californians

## California State Agencies play a role in either scoping, recommending, or selecting projects in over \$5 Billion of transportation infrastructure funding annually:

- Active Transportation Program (ATP)
- Interregional Transportation Improvement Program (ITIP)
- Local Partnership Program (LPP)
- Solutions for Congested Corridors (SCCP)
- State Highway Operations & Protection Program (SHOPP)
- Trade Corridor Enhancement Program (TCEP)
- Transit & Intercity Rail Capital Program (TIRCP)



# Process & Timeline



# CAPTI is...

- A **holistic framework** for aligning State infrastructure investments with State climate, health, and social equity goals **built on the foundation of the “fix-it first” approach** established in SB 1.
- A **suite of proposed changes** to State transportation planning, programming, and mitigation activities **to align with the CAPTI framework**
- A balanced approach that considers the need to **ensure all areas of the state can benefit from changes**, and acknowledges the need for **a range of solutions in different contexts**.



# CAPTI Investment Framework

- **10 Guiding Principles** help create a vision for how transportation investments should be prioritized
- Set of **7 Strategies and approximately 20 actions**



# CAPTI Investment Framework



**Building towards an integrated, statewide rail and transit network**



**Investing in networks of safe and accessible bicycle and pedestrian infrastructure**



**Including investments in light, medium, and heavy-duty zero-emission-vehicle (ZEV) infrastructure**



# CAPTI Investment Framework



**Strengthening our commitment to social and racial equity by reducing public health and economic harms and maximizing community benefits**



**Making safety improvements to reduce fatalities and severe injuries of all users towards zero**



**Assessing physical climate risk**



**Promoting projects that do not increase passenger vehicle travel**



**Promoting compact infill development while protecting residents and businesses from displacement**



**Developing a zero-emission freight transportation system**



**Protecting natural and working lands**

# Seven CAPTI Strategy Areas



1. Cultivate and Accelerate Sustainable Transportation Innovation by **Leading with State Investments**



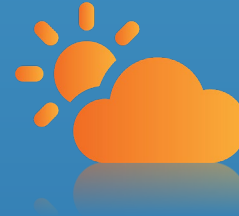
2. Support a **Robust Economic Recovery** by Revitalizing Transit, Supporting ZEV Deployment, and Expanding Active Transportation Investments



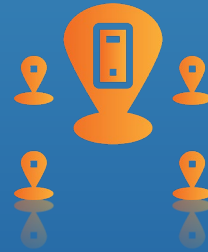
3. **Elevate Community Voices** in How We Plan and Fund Transportation Projects



4. Advance State Transportation Leadership on Climate and Equity through **Improved Planning & Project Partnerships**



5. Support **Climate Resilience** through Transportation System Improvements and Protections for Natural and Working Lands



6. Support **Local and Regional Innovation** to Advance Sustainable Mobility



7. Strengthen **Transportation-Land Use Connections**

## Example of Key Actions

### Key Actions

- S1.1 Prioritize Solutions for Congested Corridors Program (SCCP) Projects that Enable Travelers to Opt Out of Congestion
- S1.4 Mainstream Zero-Emission Vehicle Infrastructure within the Trade Corridor Enhancement Program (TCEP)
- S2.1 Implement the California Integrated Travel Program (Cal-ITP)
- S2.3 Accelerate TIRCP Cycles to Support Transit Recovery with Deployment of ZEV Transit/Rail Fleets and Transit/Rail Network Improvements

## Example of Key Actions

### Key Actions

- S3.1 Establish Transportation Equity and Environmental Justice Advisory Committee(s)
- S5.1 Develop Climate Risk Assessment Planning and Implementation Guidance
- S6.1 Explore New Mechanisms to Mitigate Increases in Vehicle Miles Travelled (VMT) from Transportation Projects
- S6.2 Convene a Roadway Pricing Working Group to Provide State Support for Implementation of Local and Regional Efforts
- S7.1 Leverage Transportation Investments to Incentivize Infill Housing Production

# Monitoring and Reporting

- Regular monitoring and evaluation of specific actions listed in CAPTI
- Annual progress report will be published to track implementation
- CalSTA proposes presenting on annual progress report at future Joint CTC, CARB, and HCD meetings

# Upcoming Engagement Opportunities

- Additional workshop(s) for public feedback in late April
- Accepting public feedback at [CAPTI@calsta.ca.gov](mailto:CAPTI@calsta.ca.gov) until 05/04/21
- Final CAPTI release planned for June 2021
- Submittal of Plan to Governor and Legislature by July 15, 2021



# Discussion

