

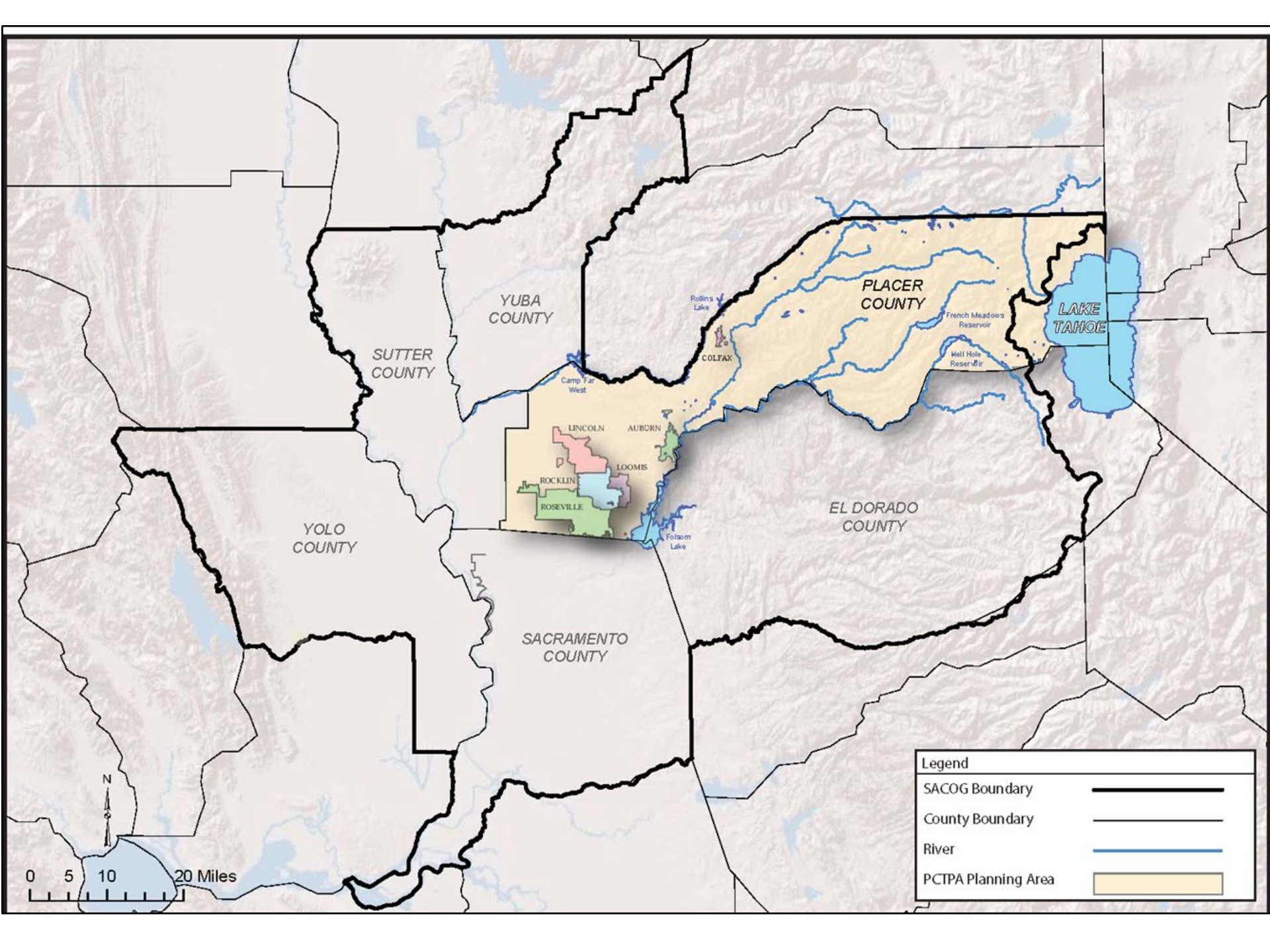


PLACER COUNTY  
TRANSPORTATION  
PLANNING AGENCY

KEEP PLACER  
MOVING

Tab 3

California Transportation Commission  
January 2019 Meeting  
Welcome to Placer County and  
The City of Rocklin





PLACER COUNTY  
TRANSPORTATION  
PLANNING AGENCY

KEEP PLACER  
MOVING

## OUR MEMBERS

### OUR CHARGE

IDENTIFY PLACER COUNTY'S TRANSPORTATION NEEDS  
SECURE FUNDING  
MAKE SURE PROJECTS GET BUILT!

CITY OF AUBURN

CITY OF COLFAX

CITY OF LINCOLN

CITY OF LOOMIS

CITY OF ROCKLIN

CITY OF ROSEVILLE

PLACER COUNTY



PLACER COUNTY  
TRANSPORTATION  
PLANNING AGENCY

KEEP PLACER  
MOVING

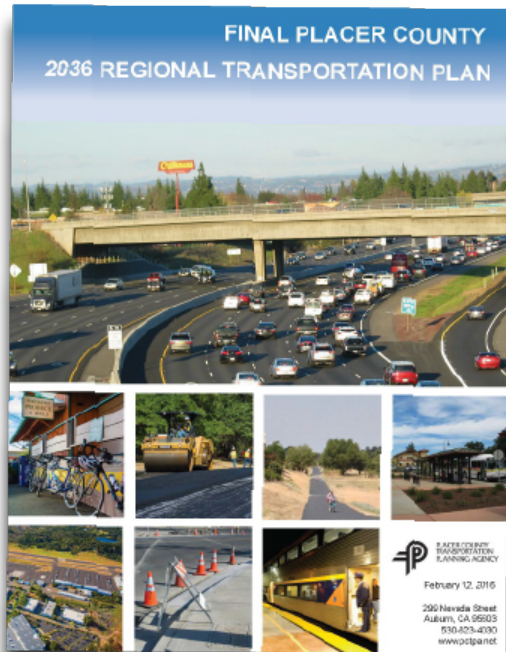




PLACER COUNTY  
TRANSPORTATION  
PLANNING AGENCY

KEEP PLACER  
MOVING

# REGIONAL INTEGRATION



- 20-YEAR PLAN
- PROJECT & PROGRAMS
- FINANCIALLY CONSTRAINED

## ADDITIONALLY

- 6-COUNTY PLAN
- COMPLIANCE W/ CLEAN AIR ACT
- SUSTAINABLE COMMUNITIES STRATEGY



## **Sierra College Interchange Raising I80—Safety/Freight Project**

- Regional Retail Centers
- Major Workforce Housing Project
- Tesla Dealership and Area Electric Vehicle Charging Facility

# Quarry District Quarry Park Adventures

- Downtown Rocklin
- Adventure Park
- Rocklin Capitol Corridor Station
- Commercial Center
- Central Core Residential
- Restaurants/Retail



WELCOME TO

# The Quarry

*Rocklin's Reimagined Downtown*

While redevelopment is happening all over the Sacramento region, there will be nothing like what the Quarry District in Rocklin has to offer. Located at Rocklin Road and Pacific, this synergistic walking district is 1 mile from Interstate 80 and central to everything. The Quarry District is bringing life back into the community and **giving people in the neighboring areas a place to live, eat and play.**



## A VIBRANT NEW DOWNTOWN



**PHASE ONE** is scheduled to host its grand opening Memorial Day weekend, May 26-27, 2018. This part of the district, called Quarry Park Adventures, will have elements never designed anywhere in the world," says adventure park President Dave Busch. The park includes 100+ aerial activities, ropes courses, rock climbing stations, Giant King Swing, Kid's Kove, cargo netting, 2,800 feet of zip lines and more. **Over 1200 passes have been sold; buy yours today at: [quarrypark.com](http://quarrypark.com).**



**PHASE TWO** of The Quarry district will open early 2019 and feature a collection of unique boutique retail, restaurants, and a 12,000 sq. ft. artisan public market space featuring local vendors. Showcased will be a variety of popular local cuisines, many new to the area. The second level will be a rentable space ideal for weddings, corporate events and family gatherings. Overlooking The Quarry will be loft style living, giving residents the ability to eat and play outside their front door. **Brentwood Developments is bringing to life what the city of Rocklin has wanted for years- a downtown they can call their own. City Spokesman, Troy Holt, feels that this new district "will be one of the many unique experiences in the region."**



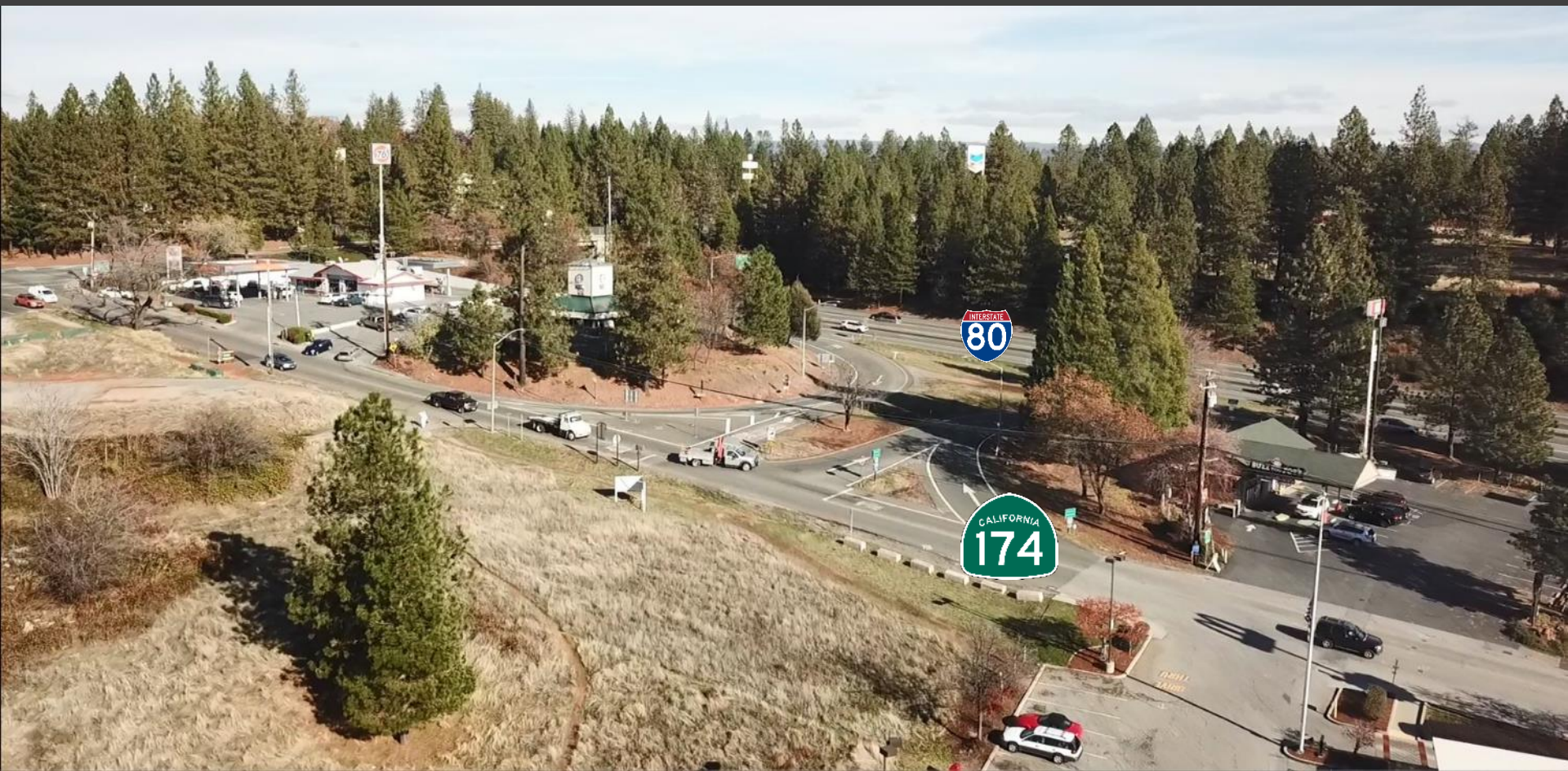
# Colfax Roundabout Project

Rural Disadvantaged Community in Sierra Foothills – Interstate 80 and State Highway 174



# Colfax Roundabout Project

Rural Disadvantaged Community in Sierra Foothills – Interstate 80 and State Highway 174





## Colfax Roundabout Project

- Median Household Income of \$48,000
- \$1.25 Million in SHOPP /\$900K CMAQ funding provides economic opportunities for rural community
- Maidu Village Project Possible – Largest Economic Development Project in Colfax in Many Years